

“ปัญญาประสาน”
Collaborative Intelligence

และ
“คลังทักษะ”
Skill Wallet

Reshaping Teaching and Learning in the AI Era

การประชุมวิชาการ ครั้งที่ 20

สมาคมเครือข่ายวิชาชีพอาจารย์และองค์กรระดับอุดมศึกษา

รศ. ดร. บวร ปภัสราทร

สถาบันคลังสมองของชาติ
มีนาคม 2568



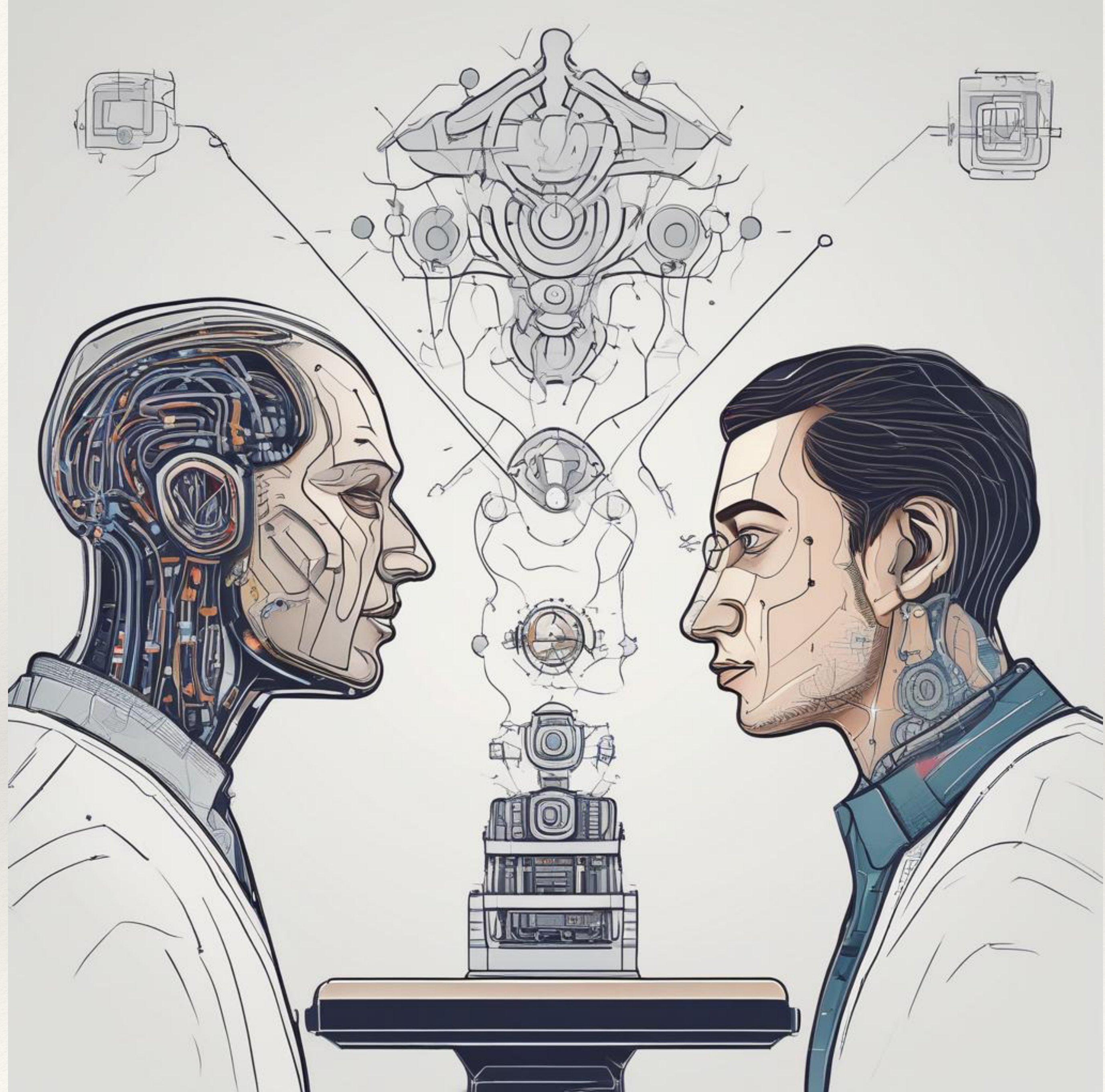
บริบทที่เปลี่ยนแปลงไป

- Rapid advancements in AI are transforming industries and the future of work.
- Traditional teaching and learning models need to evolve.
- Universities must prepare graduates for a world of human-AI collaboration.



Collaborative Intelligence ปัญญาประสาน

- *A partnership between humans and AI, leveraging their respective strengths.*
- *AI augments human capabilities, not replaces them.*
- *Focus on synergy, creativity, and ethical decision-making.*

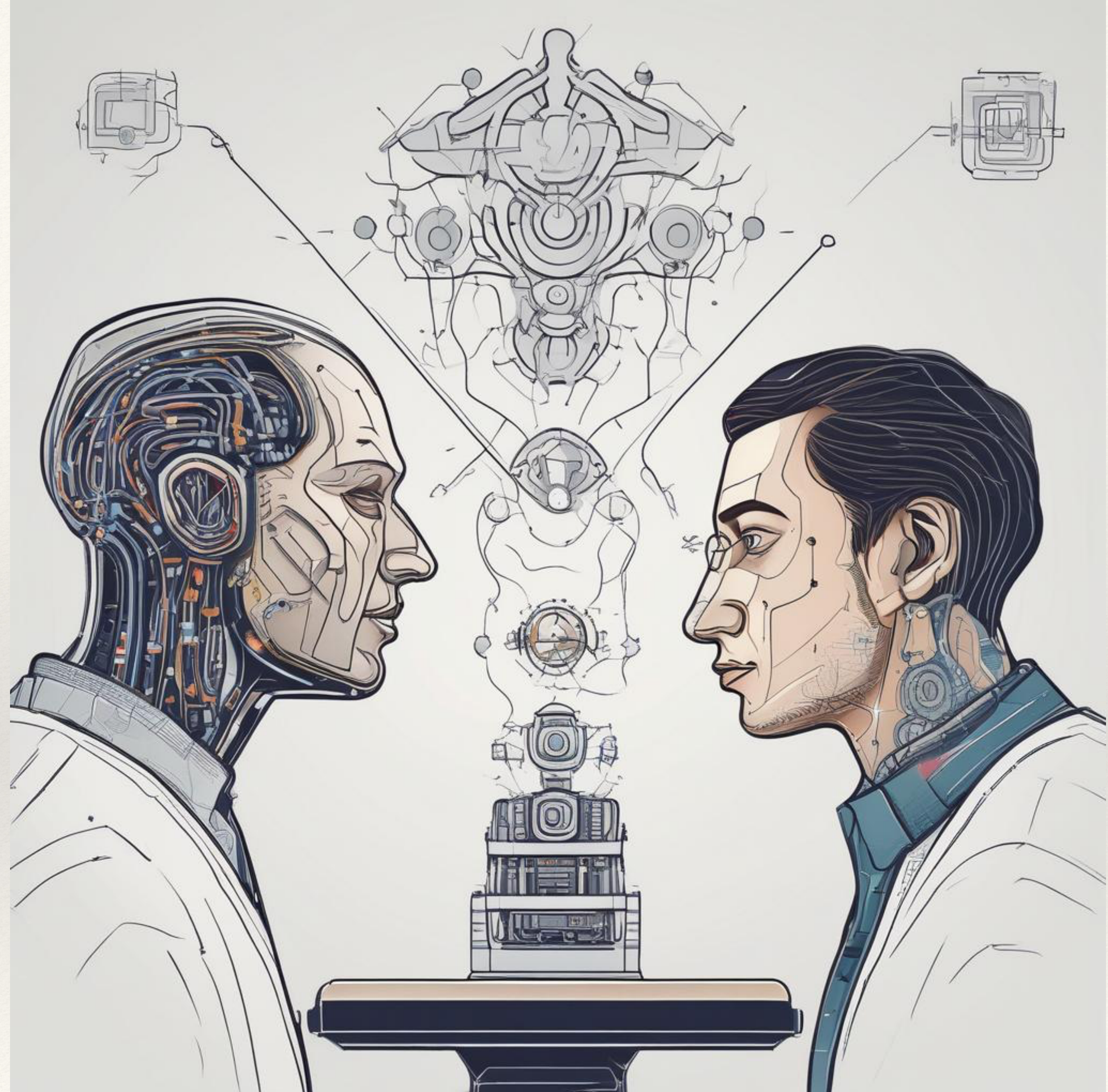


Collaborative Intelligence

ปัญญาประสาน

Essential Elements

- *Data Literacy and Analysis*
- *Human-Computer Interaction (HCI)*
- *AI Ethics and Societal Impact*
- *Critical Thinking and Problem-Solving*
- *Emotional Intelligence and Communication.*



To effectively collaborate with AI, our students need a diverse set of skills.

Human-Computer Interaction (HCI)

Data Literacy and Analysis

ปัญญาประดิษฐ์

AI Ethics and Societal Impact

Emotional Intelligence and Communication

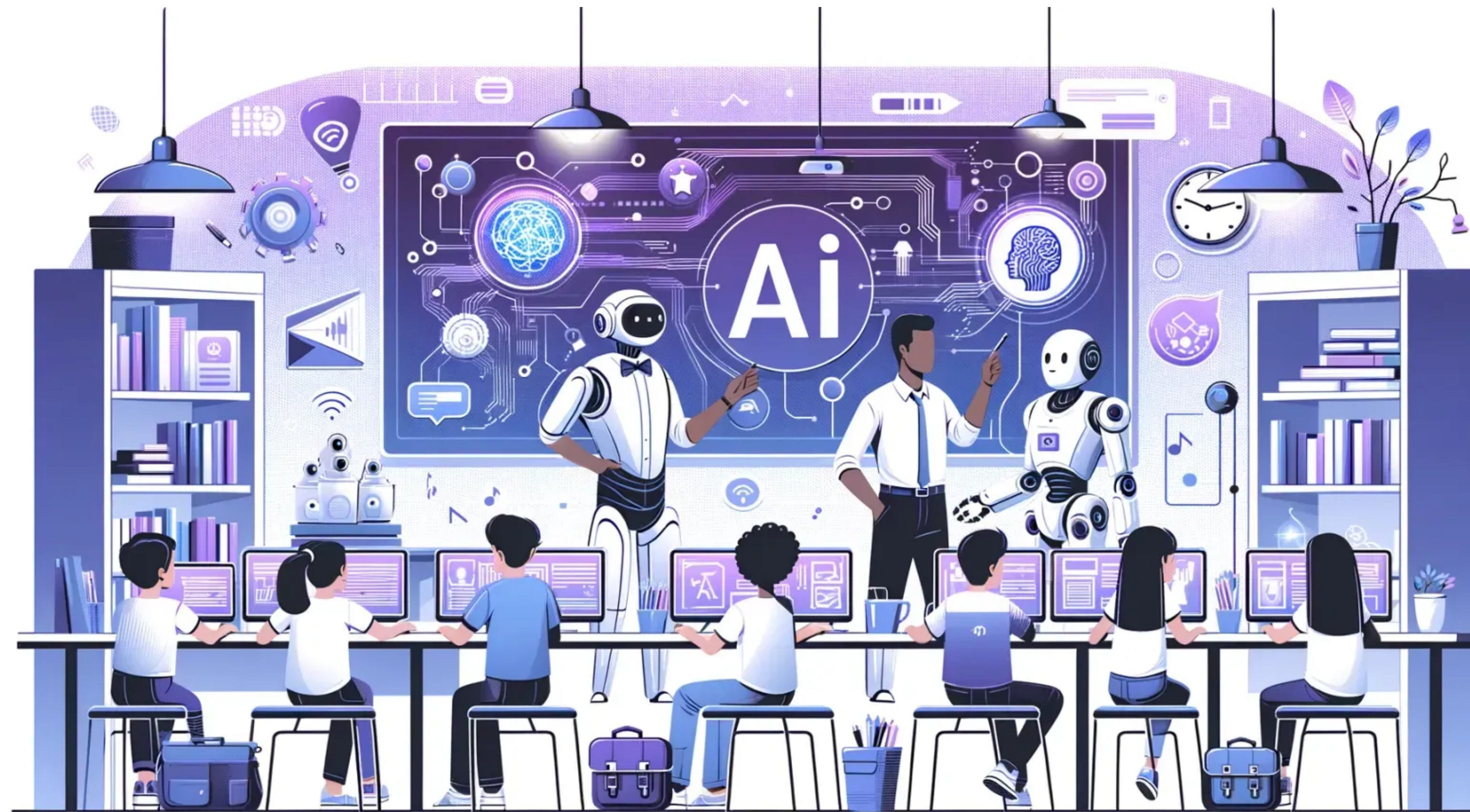
Critical Thinking and Problem-Solving

Collaborative Intelligence

ปัญญาประสาน

Practical Applications in the Classroom

- *AI-powered chatbots for student support.*
- *Adaptive learning platforms that adjust to student progress.*
- *AI-driven simulations for experiential learning.*
- *AI-assisted grading and feedback tools.*

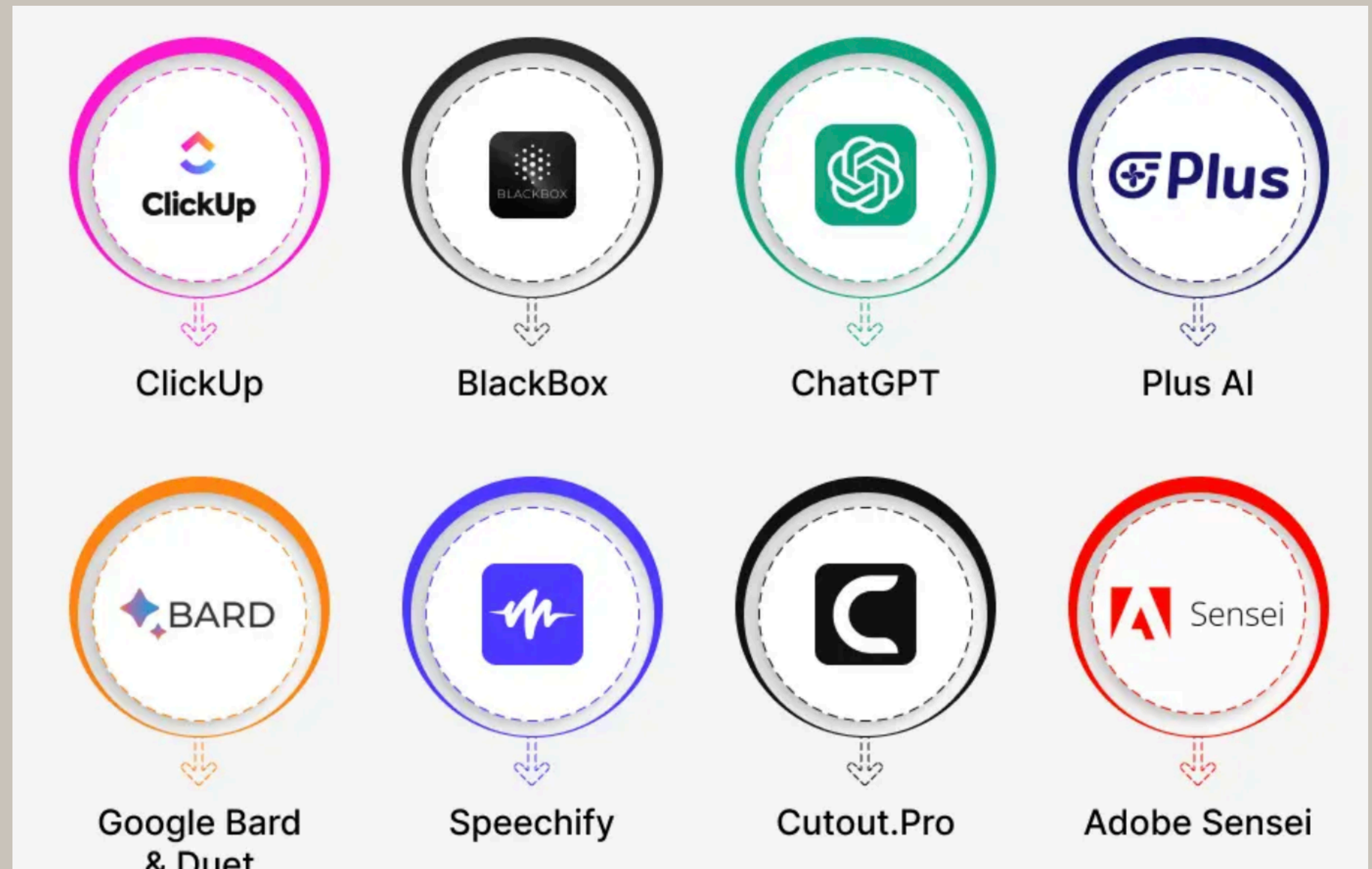


Collaborative Intelligence

ปัญญาประสาน

Transforming the Educational Experience

- *Personalized learning pathways for students.*
- *AI-powered feedback and assessment.*
- *Enhanced research and data analysis capabilities.*
- *Streamlined administrative tasks.*

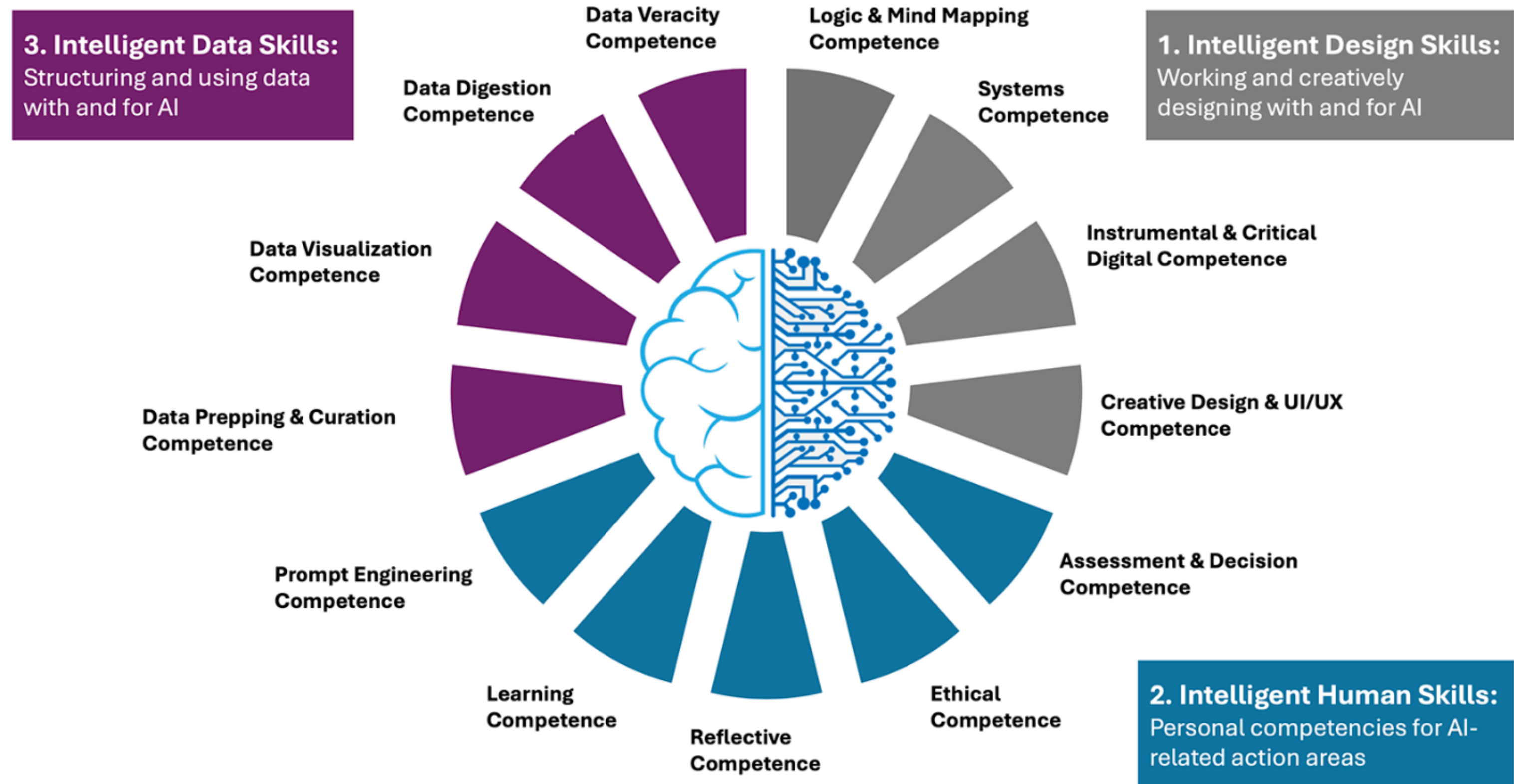


Collaborative Intelligence

ปัญญาประสาน

Cultivating "ปัญญาประสาน (Panya Prasarn)" Competency

- *Interdisciplinary curriculum development.*
- *Experiential learning opportunities (AI labs, projects).*
- *Emphasis on AI ethics and responsible innovation.*
- *Faculty development in AI literacy and collaborative teaching.*

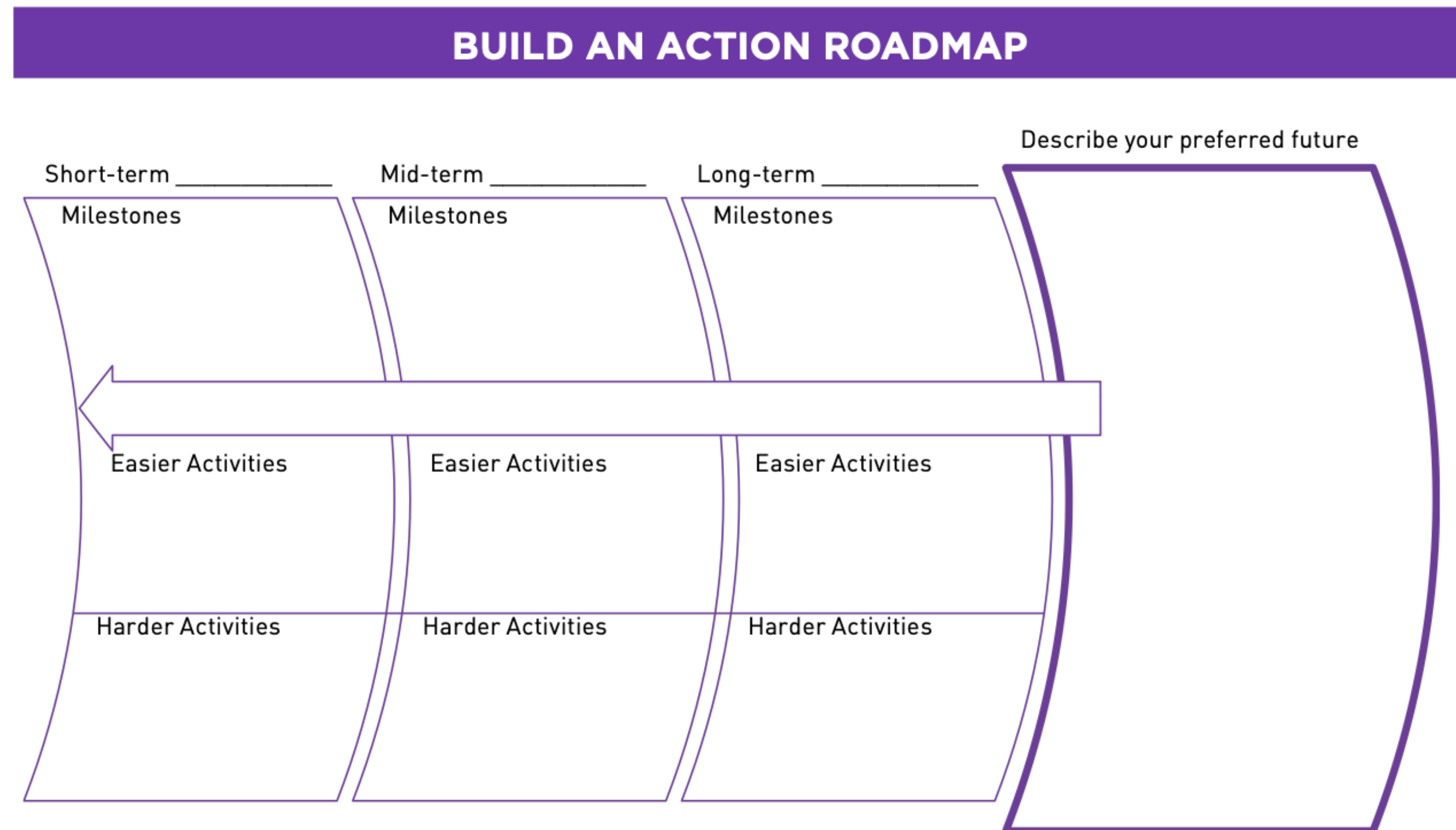


Collaborative Intelligence

ปัญญาประสาน

University Action Plan

- *Integrate AI and collaborative learning into all programs.*
- *Establish AI-focused research and innovation centers.*
- *Foster industry partnerships for AI-related projects.*
- *Develop ethical guidelines for AI use in education.*



Collaborative Intelligence

ปัญญาประสาน

Measuring Success

- *Percentage of courses incorporating AI content.*
- *Number of students participating in AI-related projects.*
- *Graduate survey data on AI competency.*
- *Employer feedback on graduate readiness.*



คลังทักษะ The SkillWallet : Your Digital Learning Passport

- *A dynamic, digital record of individual learning outcomes.*
- *Captures granular skills, evidence, and context.*
- *Empowers students to showcase their competencies effectively.*
- *Facilitates lifelong learning and career development.*

Learner Credential Wallet Specification

Editors: Kim Hamilton Duffy, Ulrich Gellersdörfer, James Goodell, Matt Lisle, Brandon

Muramatsu, Philipp Schmidt

Copyright MIT, May 2021



คลังทักษะ

The SkillWallet

Beyond Traditional Transcripts: Detailed Outcomes

- *Specific learning outcomes: e.g., "Developed a machine learning model for fraud detection."*
- *Evidence and artifacts: links to portfolios, GitHub, digital badges.*
- *Contextual information: course details, project descriptions, assessment results.*
- *Skill dependencies and Learning pathways.*

Term	Definition
Credential	A set of one or more claims made by an issuer.
Issuer	The entity asserting claims.
Subject	A thing about which claims are made. In this document, the subject is the student (or learner) possessing the wallet
Identifier	A way to refer unambiguously to an entity, used here in the same sense as in the VC data model. ² The subject of a credential is identified with the <code>credentialSubject.id</code> property in a VC. The identifier data type in the VC data model is a Uniform Resource Identifier (URI).
Verifiable Credential (VC)	Tamper-evident credential with cryptographically verifiable authorship.
Presentation	Data derived from one or more VCs, issued by one or more issuers, that is shared with a specific relying party by the holder.

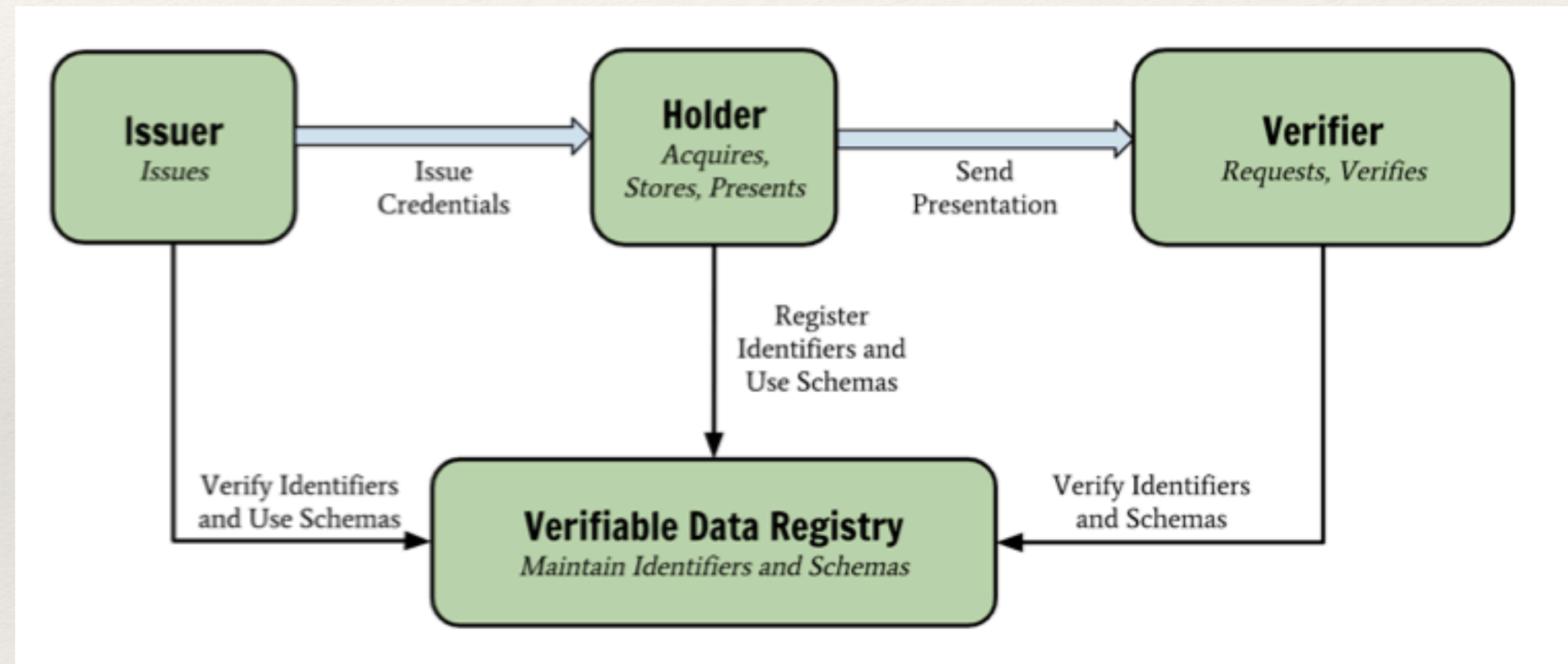
<https://digitalcredentials.mit.edu/docs/Learner-Credential-Wallet-Specification-May-2021.pdf>

Collaborative Intelligence

ปัญญาประสาน

Building Trust: Verification and Validation

- *Instructor verification of skills and outcomes.*
- *Peer validation and feedback.*
- *Integration with external validation platforms.*
- *Blockchain technology integration for immutability.*



Learner Credential Wallet Specification

Editors: Kim Hamilton Duffy, Ulrich Gellersdörfer, James Goodell, Matt Lisle, Brandon

Muramatsu, Philipp Schmidt. Copyright MIT, May 2021



What is a micro-credential?



Non-college-credit training focused
on a single skill or cluster of skills



Study, practice, and improve
upon a specific skill quickly



Signals the completion
of a skills-based learning experience



Digital Badges

One type of micro-credential offered by the Alamo Colleges



Two types of learning experiences

that result in a digital badge at our Alamo Colleges



- **In a micro-course**
Online, on-demand
training
- **10-15 hours**
to complete



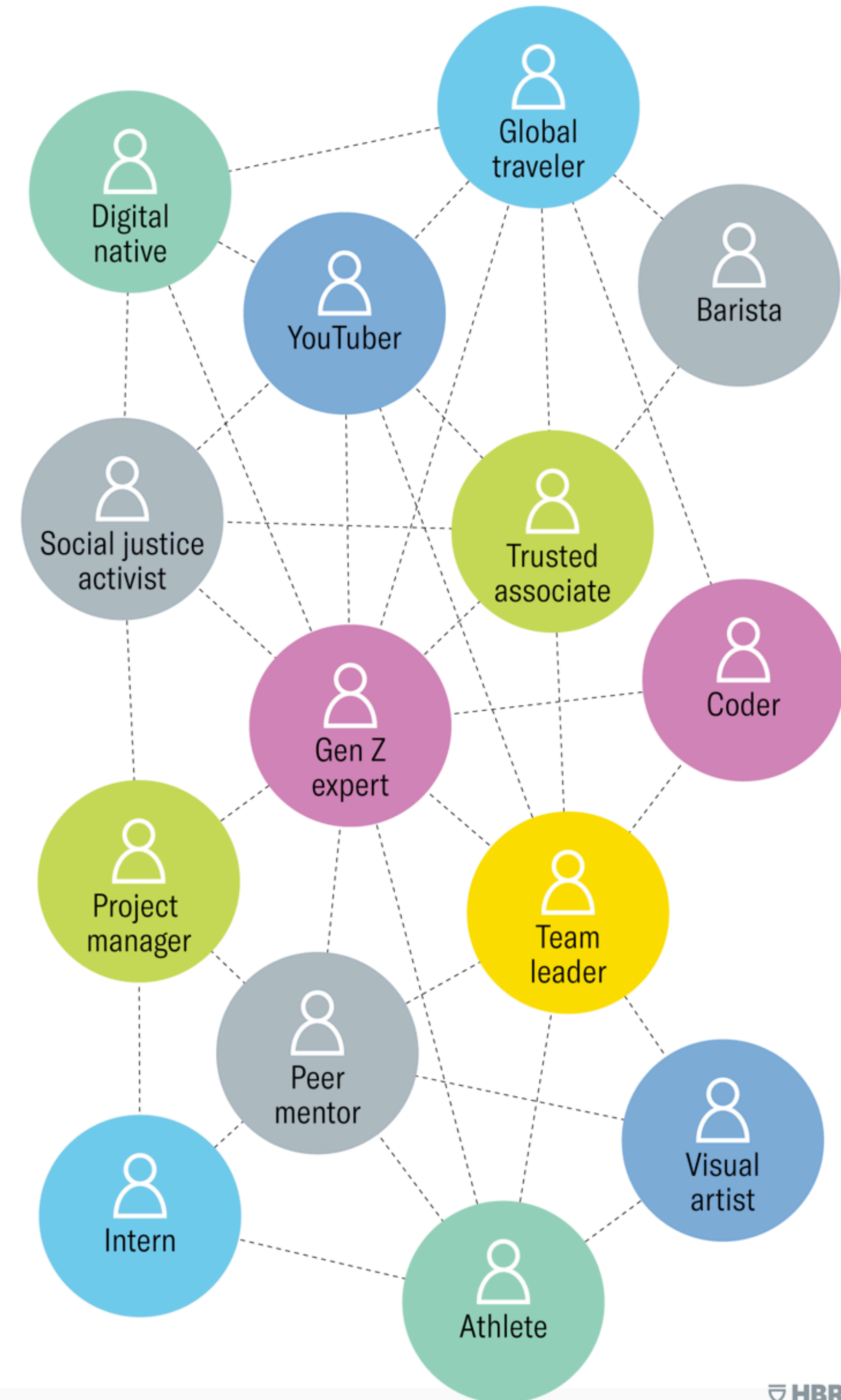
- **Within a college-
credit course**
- **Same length
as course**
depending on
requirements

คลังทักษะ

The SkillWallet

Benefits for All: Students,
Educators, and Employers

- *Students: Enhanced portfolio and career opportunities.*
- *Educators: Improved assessment and curriculum development.*
- *Employers: Streamlined talent acquisition and skill validation.*
- *Lifelong learning tracking.*



Talent Acquisition vs Recruitment

The Differences

Recruitment

VS

Talent Acquisition

Short-term

/emphasis on filling immediate vacancies/

Long-term

/talent acquisition is an ongoing strategy by anticipating future staffing requirements based on business needs/

Regular recruitment and volume hiring, usually for entry-level roles

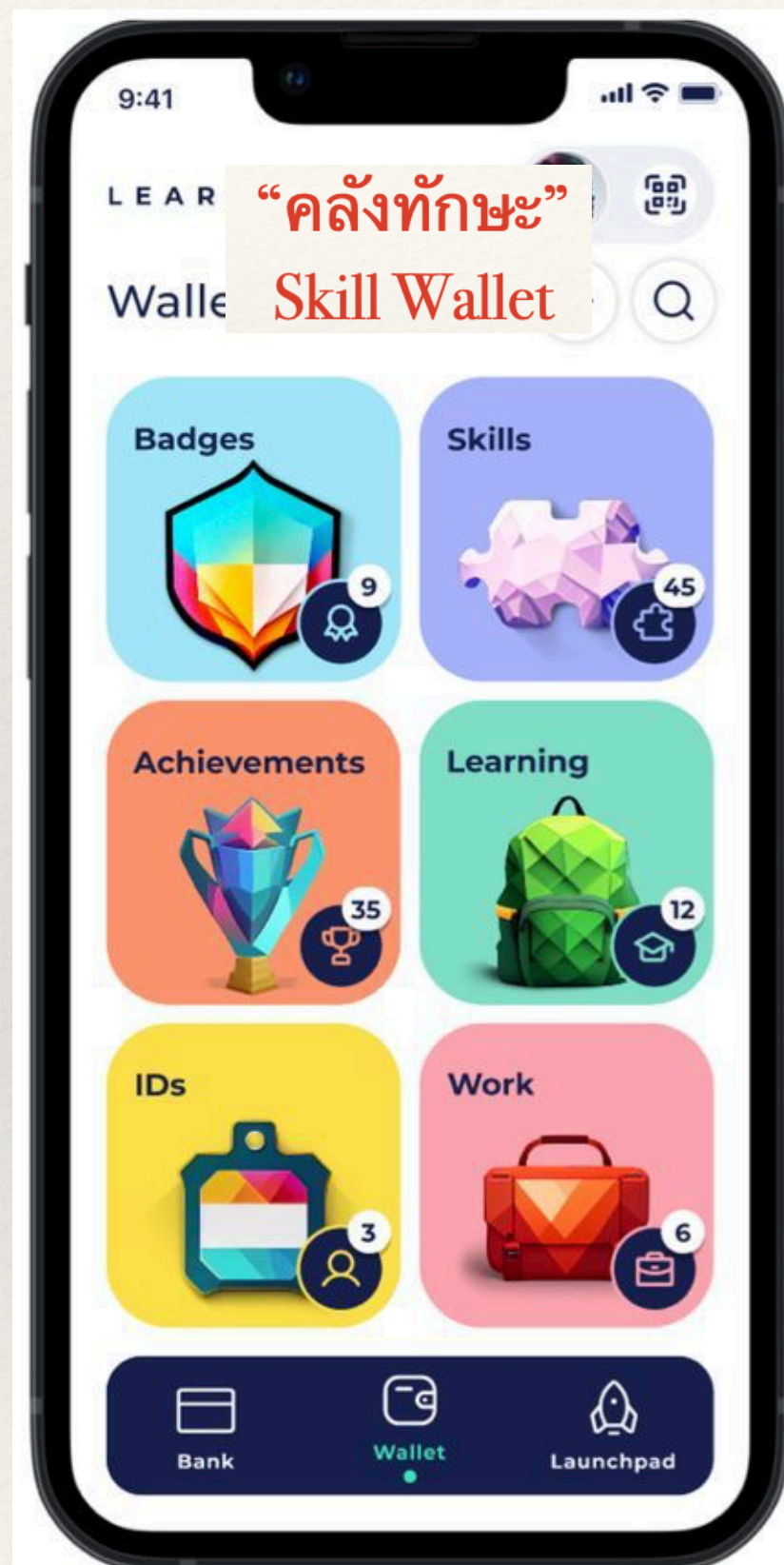
Focuses on the strategic side of hard to fill positions

Can be deployed immediately

/recruiters always hire for positions that are always needed, so recruiting tactics are deployed on the get-go/

Employs more time and planning

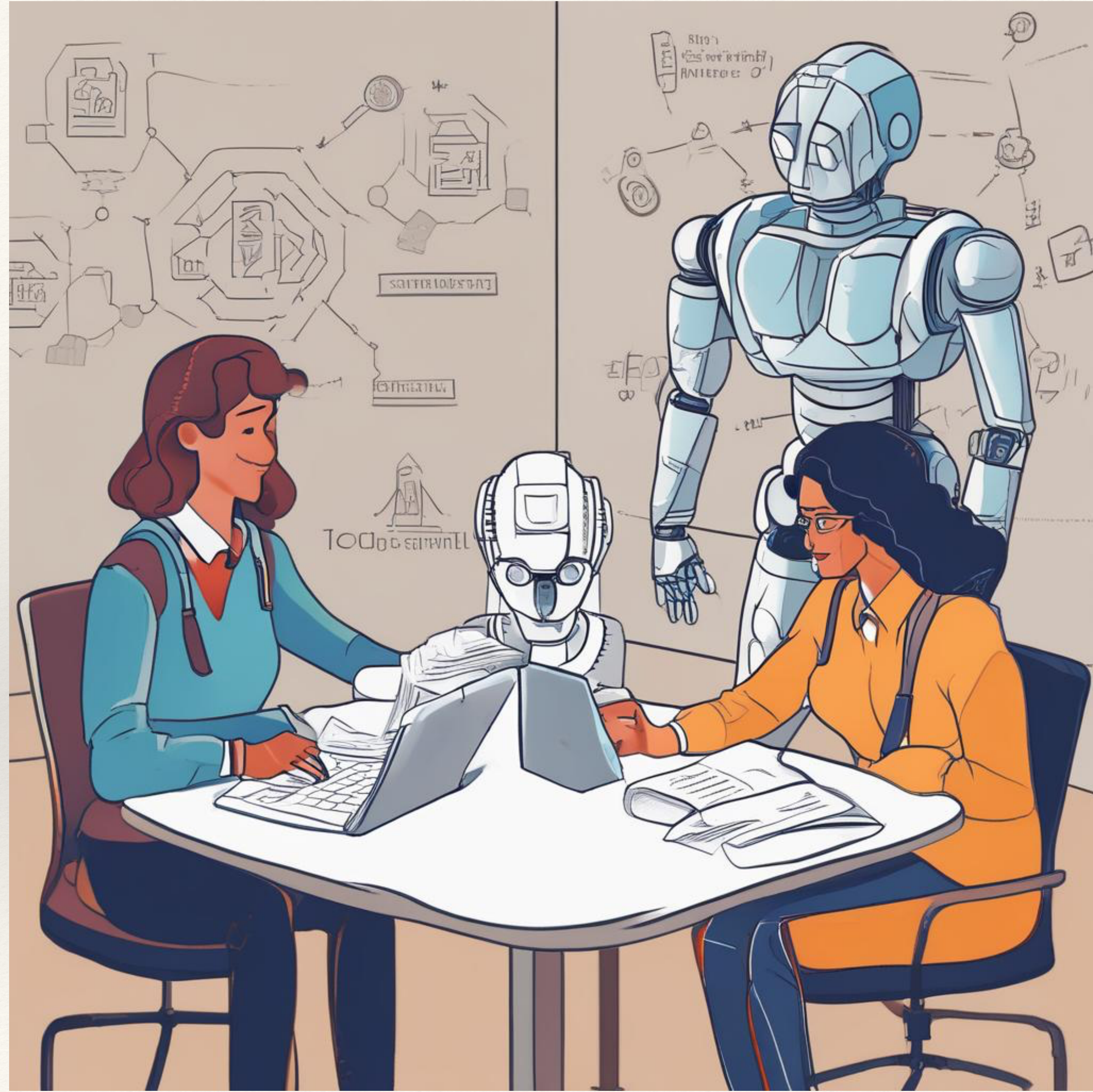
/TA specialists study the company's different roles and departments, as well as the skills and experience needed to succeed in each area/



Collaborative Intelligence
ปัญญาประสาน และ
“คลังทักษะ”
Skill Wallet

Embracing the Future of Education

- *Let's collaborate to integrate AI into our teaching and learning practices.*
- *Share best practices and innovative approaches.*
- *Prepare our students for a future of human-AI collaboration.*
- *Facilitate talent acquisition and skill validation.*



รองศาสตราจารย์ ดร. บวร ปภัสราทร

ผู้อำนวยการ สถาบันคลังสมองของชาติ

ประธานอนุกรรมการส่งเสริมการจัดการศึกษาตลอดชีวิต และคลังหน่วยกิตกลาง

IEEE Senior Member

ผู้ประเมินรางวัลคุณภาพแห่งชาติ Thailand Quality Award (TQA)

ผู้ตรวจประเมินเกณฑ์คุณภาพการศึกษาเพื่อการดำเนินการที่เป็นเลิศ (EdPEX)

รองศาสตราจารย์ คณะเทคโนโลยีสารสนเทศ มหาวิทยาลัยเทคโนโลยีพระจอมเกล้าธนบุรี

รางวัลเสมาคุณูปการ กระทรวงศึกษาธิการ

รางวัลโล่เกียรตินิยม "นราธิปพงศ์ประพันธ์" สถาบันบัณฑิตพัฒนบริหารศาสตร์

ผลงานวิจัยที่ได้รับการตีพิมพ์ <https://scholar.google.co.th/citations?user=dP๗LsCAAAAAAJ&hl=en&oi=ao>

บทความก้าวไกลวิสัยทัศน์ กรุงเทพธุรกิจ <https://www.bangkokbiznews.com/tags/บวร%๒๐ปภัสราทร>

